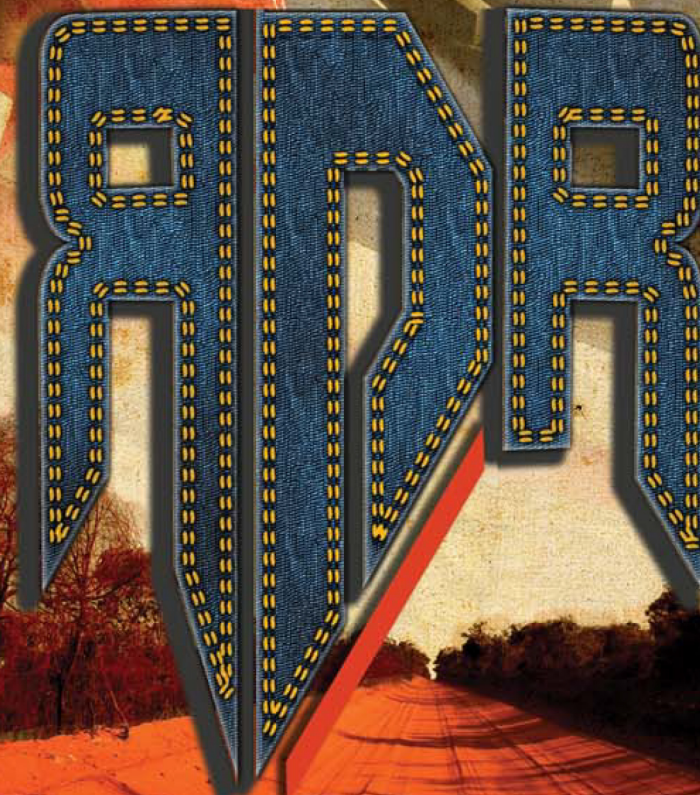


**RED DIRT ROAD**



**RED DIRT ROAD**

TS-16949 Q59000 VIA TÜV JLL DOT



**OFF ROAD WHEELS**



pickin' up



**DIRT**

**ROCKY**



**DIRT RD-01 18" 20" 22"**  
Finishes: All Blk, **Blk/Machined** & Chrome

**ROCKY RD-02 17" 20" 22"**  
Finishes: ALL Blk, **Blk/Machined** & Chrome

TREK



TREK RD-03 17" 18" 20"  
Finishes: All Blk, Blk/ Machined & Chrome

USA



USA RD-04 17" 18" 20" 22"  
Finishes: ALL Blk, Blk/Machined & Chrome

**BOSS**



**BOSS RD-05 16" 17" 20"**  
Finishes: All Blk, **Blk Lip/Machined** & Chrome

**THUNDER**



**THUNDER RD-06 16" 17" 18"**  
Finishes: All Blk, **Blk/Machined** & Chrome

I'm proud to be an American, where at least I know I'm free. And I won't forget the men and women who died, who gave that right to me.



**CHROME      BLACK/MACHINED      ALL BLACK**



<b>DIRT RD-01</b>		
SIZE	LUG	OFFSET
18x9	5, 6 & 8 lug	-12,0,+12
20x9	5, 6 & 8 lug	-12,0,+12
22x10	5, 6 & 8 lug	-12,0,+12



<b>ROCKY RD-02</b>		
SIZE	LUG	OFFSET
17x9	5,6 & 8 lugs	-12,0,+12
20x9	5,6 & 8 lugs	-12,0,+12
22x10	5,6 & 8 lugs	-12,0,+12



<b>TREK RD-03</b>		
SIZE	LUG	OFFSET
17x9	5, & 6 lug	-12,0,+12
18x9	5, & 6 lug	-12,0,+12
20x9	5, & 6 lug	-12,0,+12



<b>USA RD-04</b>		
SIZE	LUG	OFFSET
17x9	5, 6 & 8 lug	-12,0,+12
18x9	5, 6 & 8 lug	-12,0,+12
20x9	5, 6 & 8 lug	-12,0,+12
22x10	5, 6 & 8 lug	-12,0,+12



<b>BOSS RD-05</b>		
SIZE	LUG	OFFSET
16x8	5,6 & 8 lugs	-12,0,+12
17x9	5,6 & 8 lugs	-12,0,+12
20x10	5,6 & 8 lugs	-12,0,+12



<b>THUNDER RD-06</b>		
SIZE	LUG	OFFSET
16x8	5,6 & 8 lugs	-12,0,+12
17x9	5,6 & 8 lugs	-12,0,+12
18x9	5,6 & 8 lugs	-12,0,+12